



Coffee table 160 x 60 cm

Coffee table 160 x 60 cm with aluminium structure and ceramic or Synteak top

Collection

Konic



Structure



mat moka
AL02

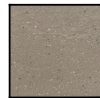


mat grey
AL08

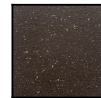


mat blanc
AL04

Plateau



TR4
TR4



TR5
TR5



teak
VI20



teak
VI20



Caractéristiques

Dimensions : 160 × 60 × 30 cm

Poids brut : kg

Poids net : 36 kg

Volume : 0.39 m³

Structure : Aluminium laqué

Plateau : Ceramic or Synteak